

**A New Shape.
A New Standard.**

The Amsco[®] Evolution[™]
Steam Steriliser





AN EVOLUTIONARY ADVANCE IN STERILISER CONTROL

The difference in Evolution's controls is obvious, even from across the room. The end results – improvements in quality and productivity – will be just as clear.

A dramatic redesign of Evolution's controls and displays includes crystal clear, high-resolution graphics and an Ethernet-enabled PC control. With one touch, operators can begin to learn it and put it to work.

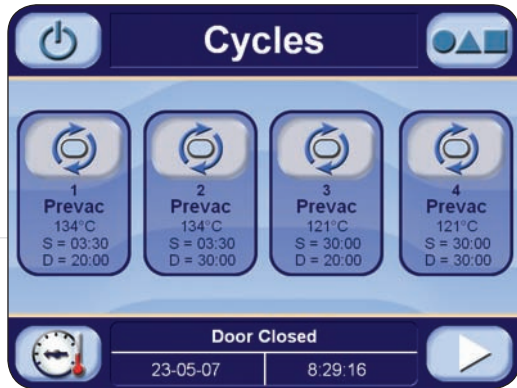
Look forward to Evolutionary differences in your Sterile Processing Department with greater throughput, reduced downtime and improved efficiency.



One-touch control display at ergonomic height

Steriliser settings are easily customised according to department needs



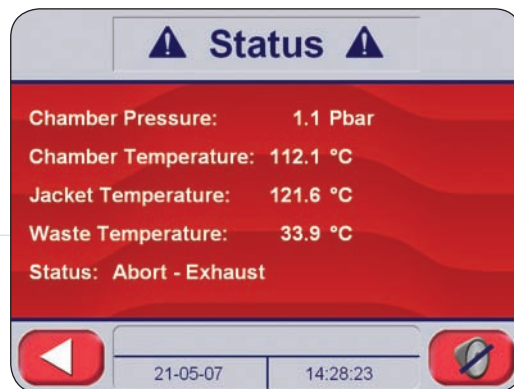


Password protected, operator adjustable cycle parameters*



New Amsco Evolution features:

- > Compliant with all relevant EN standards
- > Ethernet-enabled PC control of all functions
- > High-resolution multi-color graphics
- > Large 214mm touch-screen display
- > Multilingual controls and printouts
- > On-board impact printer for permanent records
- > Remote monitoring-enabled to improve system uptime
- > Instrument tracking system interface capability
- > Designed for future remote software upgrades
- > One-piece exterior panel offers easy access for service and validation



Bold colour graphics clearly indicate cycle phase and status



Large "time remaining" display is visible from across the department

* Deviation from pre-programmed cycles requires user validation

Unique round chamber provides strength, durability and efficiency other steam sterilisers cannot match



AN EVOLUTIONARY ADVANCE IN FORM AND FUNCTION

Open the door and look inside. This is where Amsco Evolution's unique shape really shines, providing consistent quality and reliability beyond other chamber designs.

Evolution's unique, inherently strong round or elliptical form promotes even pressure and heat distribution within the chamber. It is also inherently efficient, with a fully jacketed chamber that minimizes condensation and maintains quality through every cycle. The 660mm-wide chamber opening facilitates easy loading, and processes each load with minimal steam consumption.

With a unique form, which improves function and helps to reduce operating costs over time, Evolution is an advance worth looking into.



Elliptical chamber provides maximum capacity for maximum productivity

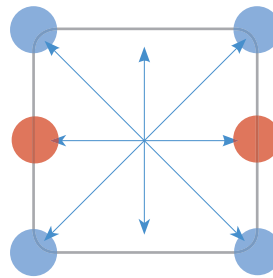


Unique one-piece door gasket requires no lubrication and is warranted for two years

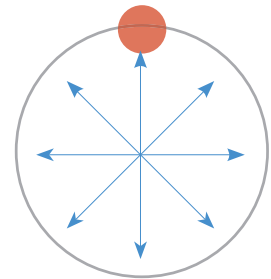


Evolution features an ergonomic loading system with precision alignment

Evolution eliminates the stress points associated with 90° bends in chamber metal.



Inherently strong shape promotes even pressure distribution.



Amsco Evolution's unique chamber features:

- > 316 L stainless steel construction
- > Fewer welds, resulting in less metal fatigue
- > Fully jacketed chamber to optimise even chamber heating and minimise condensation
- > Separate steam supply to jacket and chamber
- > Automated horizontal or vertical door opening with auto-stop safety feature
- > Steam-activated gasket to lessen the possibility of air entering the chamber
- > Easy access and loading
- > Easy-to-align loading system eliminates operator handling of hot loads

Available in a variety of sizes with single and double door:

Model #	Chamber Dimensions	Litre Size	STU	Door Configuration
HC-600	660 x 660 x 991mm	430	6	Vertical Sliding
HC-800	660 x 660 x 1245mm	540	8	Vertical Sliding
HC-1000	660 x 660 x 1549mm	675	10	Vertical Sliding
HC-900	660 x 950 x 914mm	575	9	Horizontal Sliding
HC-1200	660 x 950 x 1219mm	766	12	Horizontal Sliding
HC-1500	660 x 950 x 1524mm	958	15	Horizontal Sliding

AN EVOLUTIONARY ADVANCE IN INSTALLATION AND OPERATION

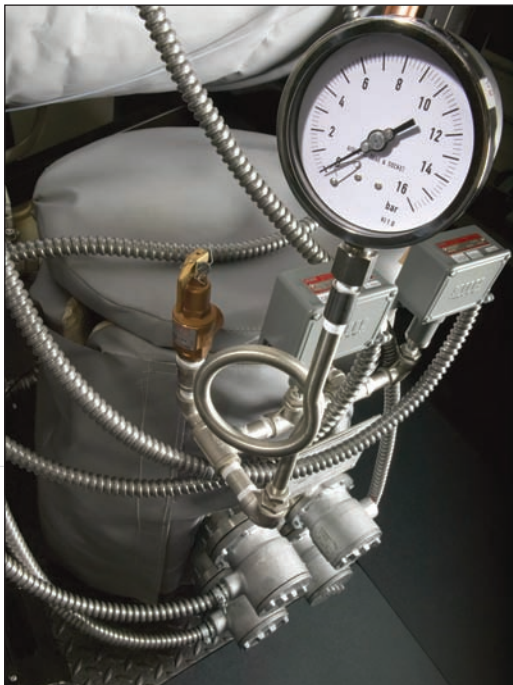
Because of its exquisitely engineered modular design, Evolution's piping and wiring system can be rolled into place – to the left or right of the chamber – with all the connections completed in about five minutes.

Leading-edge plumbing components work together in a freestanding design that makes perfect sense for ease of installation, operation and service.

But inside is where quality parts make a real difference in performance and longevity. This system features stainless steel piping, high-performance Burkert valves, and clean, reliable Triclamp fittings throughout. Evolution's new piping system is engineered to be the ultimate in modularity, reliability, and performance.



Quick, flexible connections to utilities and drain



Integrated steam generator – stainless steel construction is CE marked and PED compliant



Long-life Burkert valves for maximum uptime



Completely modular,
completely portable



Triclamp fittings provide clean connections and complete modularity for easy servicing



Two-stage vacuum pump reduces water consumption and provides quick, quiet, consistent chamber evacuation

Amsco Evolution modular plumbing system features:

- > Five-minute installation
- > Freestanding on left or right side of chamber
- > Burkert valves for reliable operation
- > Triclamp fittings for cleanliness, modularity and easy service
- > High quality stainless steel piping and components
- > Efficient, quiet two-stage vacuum pump
- > Service accessibility in minutes
- > Meets or exceeds all EN requirements

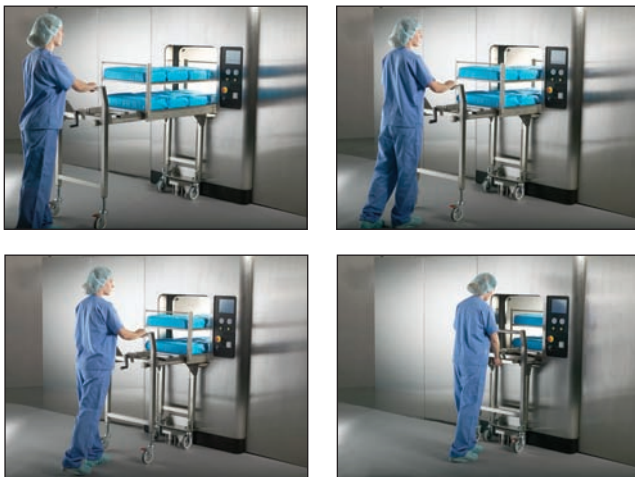
AMSCO EVOLUTION – ACCESSORIES

Evolution can be accessorised to meet specific environmental and workflow requirements for maximum productivity and improved throughput in your Sterile Processing Department.



Cabinet Packages

Evolution is available recessed within the wall or with a fully enclosed cabinet.



Manual Loading/Unloading Systems

- > Eliminates operator handling of hot loads
- > Durable, all-stainless-steel sterile side construction
- > Swivel casters (lockable in rear)
- > Locking mechanism at floor of machine for easy alignment and secure unloading



Automated Loading/Unloading System (ALUS)

- > Fully automated shuttle system
- > Fully automated load/unload tables

STERIS OFFICES WORLDWIDE

Benelux	32 2 523 2488	Japan	81 3 5521 2104
Canada	800 661 3937	Korea	82 2 517 1517
China	86 21 6137 1166	Latin America	800 884 9550
France	33 0 2 38 70 83 50	Malaysia	6 03 7954 9822
Germany	49 2203 890 6969	Singapore	65 68 41 7677
Greece	30 210 6800848	Spain	34 91 658 5920
India	91 33 2367 5150	Switzerland	41 32 376 0200
Italy	39 22 130341	United Kingdom	44 1256 840400

Document # M3088GB.2007-06, Rev. A
Childers Printed 02/2008, 1000

©2007-2008 STERIS Corporation.
All rights reserved. Printed in USA.

Technologies to Prevent Infection and Contamination™

STERIS®



STERIS Corporation
5960 Heisley Road
Mentor, OH 44060-1834 ■ USA
440-354-2600 ■ 800-548-4873
www.steris.com

STERIS Ltd
STERIS House
Jays Close Viables
Basingstoke
Hampshire RG22 4AX UK
Tel. +44 1256 840400 0800 252609